

Referee:
 Umpires: /
 Commissioner:

x, 10:30, Game-ID: BON-CI

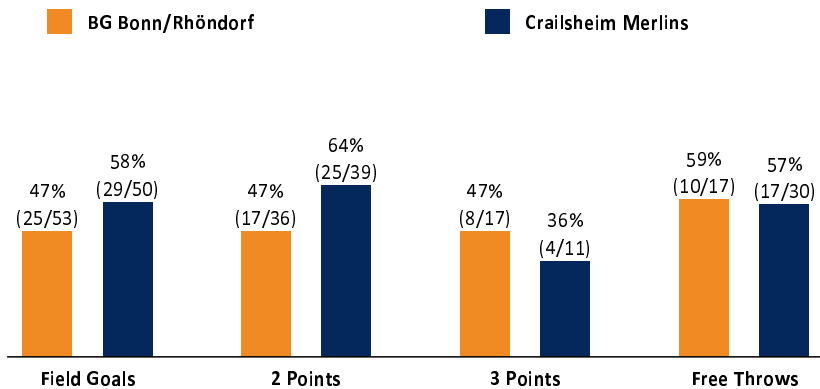
	Q1		Q2		Q3		Q4	
BON	13	13	16	29	20	49	19	6
CRA	21	21	33	54	9	63	16	7

BON - BG Bonn/Rhöndorf (Coach:)

No.	Name	Min	PTS	2 Points	3 Points	Field Goals	Free Throws	OR	DR	TR	AS	ST	TO	BS	SB	PF	FD	EFF	+/
*4	WICHT L	11:46	0										1			1		-1	-6
5	OTTERPOHL J	22:49	12	4/8 (50%)		4/8 (50%)	4/4 (100%)		1	1	1		1			2	4	9	-1
*6	KUNERT N	32:21	15	2/4 (50%)	3/6 (50%)	5/10 (50%)	2/3 (67%)		5	5	1	1	2			2	3	14	-5
7	BARDON J	4:46	0															0	-2
*8	BRAZIL L	30:23	6	1/3 (33%)	1/4 (25%)	2/7 (29%)	1/2 (50%)	3	1	4	4	2	2			2	1	8	-2
9	MATIS L	12:37	0	0/5 (0%)		0/5 (0%)		1		1		1				3		-3	0
*10	OPADEJI N	6:14	0						1	1			2			1		-1	-2
*11	WOHLERT F	23:47	19	5/8 (63%)	3/4 (75%)	8/12 (67%)	0/2 (0%)	1		1	1	2	2			5	2	15	-8
12	PAPEZO O	32:30	14	4/6 (67%)	1/1 (100%)	5/7 (71%)	3/4 (75%)	3	5	8		2	4		1	3	3	17	7
13	IDBIHI K	19:24	2	1/1 (100%)	0/1 (0%)	1/2 (50%)	0/2 (0%)	1	1	2	1					3	2	2	3
14	KLEPAC M	2:08	0	0/1 (0%)		0/1 (0%)							1					-2	-6
15	NEUBERT M	1:15	0		0/1 (0%)	0/1 (0%)			1	1								0	-1
Team / Coach								5	1	6								6	
Totals		200:00	68	17/36 (47%)	8/17 (47%)	25/53 (47%)	10/17 (59%)	14	16	30	8	8	15		1	22	15	64	-1

CRA - Crailsheim Merlins (Coach:)

No.	Name	Min	PTS	2 Points	3 Points	Field Goals	Free Throws	OR	DR	TR	AS	ST	TO	BS	SB	PF	FD	EFF	+/
*1	OEHM C	35:30	7	3/4 (75%)		3/4 (75%)	1/5 (20%)		2	2	3	1	1			1	3	7	14
*2	STRUBO B	17:58	5	1/1 (100%)	1/2 (50%)	2/3 (67%)							1			2		3	2
3	SPINDLER I	23:13	17	4/6 (67%)	1/2 (50%)	5/8 (63%)	6/7 (86%)				1					4	4	14	5
4	KELLER M	9:27	0	0/1 (0%)		0/1 (0%)		1		1			1			4		-1	4
*5	GUNDEL F	30:10	19	7/11 (64%)		7/11 (64%)	5/8 (63%)	2	1	3		3	4			3	4	14	17
7	WÜST H	18:57	4	2/3 (67%)	0/1 (0%)	2/4 (50%)			1	1							1	3	-4
*9	OHR L	33:39	16	3/4 (75%)	2/5 (40%)	5/9 (56%)	4/5 (80%)	1	2	3		3	3			2	5	14	1
*15	GEORGI P	31:06	11	5/9 (56%)	0/1 (0%)	5/10 (50%)	1/5 (20%)	6	9	15	2		1	1			5	19	14
Team / Coach								1	1	2							2		
Totals		200:00	79	25/39 (64%)	4/11 (36%)	29/50 (58%)	17/30 (57%)	11	16	27	6	7	11	1		16	22	75	11



BON	CRA
14 / 16 / 30	11 / 16 / 27
8	6
22	16
15	22
15	11
8	7
30	50
16	13
0 (2:2)	27 (25:52)
6-0 (17:21)	19-0 (23:49)
	Lead Changes: 0
	Times Tied: 1